

Implementation of the Texas Model Application

**2006 ADCIRC Workshop
March 6-7, 2006**

J.C. Dietrich
J.J. Westerink
J.H. Atkinson
J. Westerink

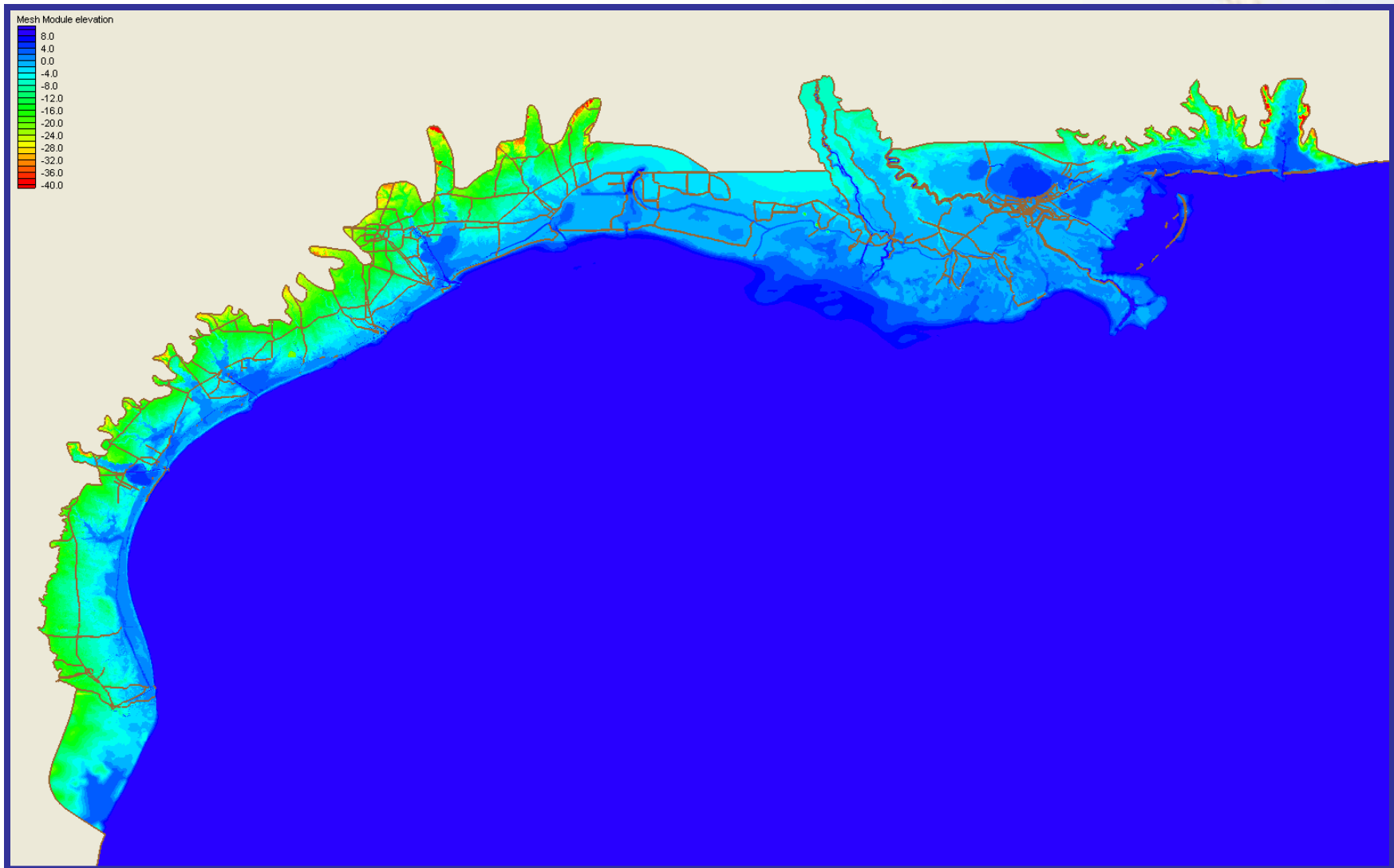
Model Development

Quick Facts

- Developed from the S08 model of southern Louisiana
- High-resolution extends:
 - From Brownsville, TX, to Mobile Bay, AL
 - To the 18m contour
- Minimum grid spacing is 60-100 meters
- Total of 1.14 million nodes

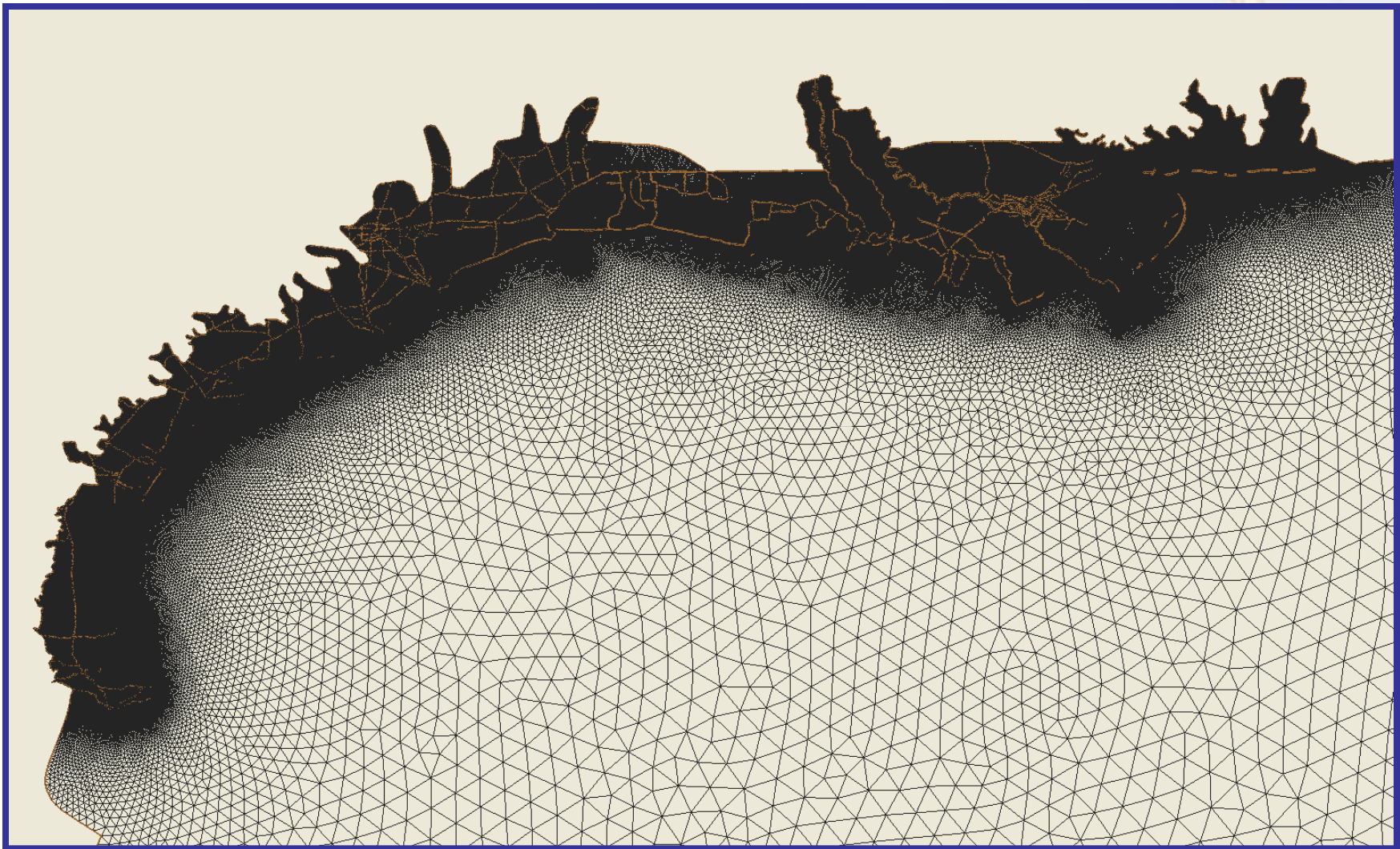
Model Development

TF02 Bathymetry



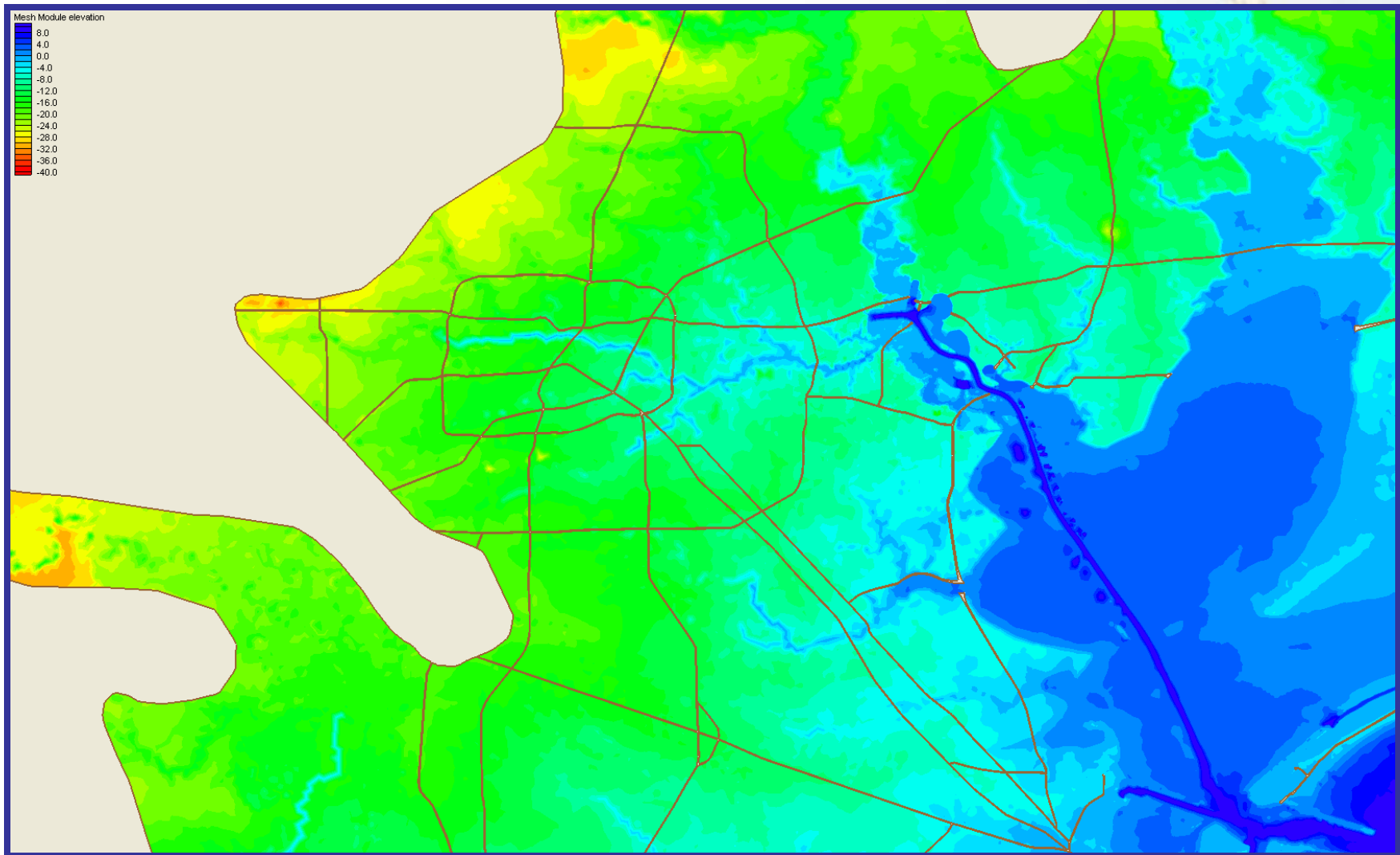
Model Development

TF02 Grid



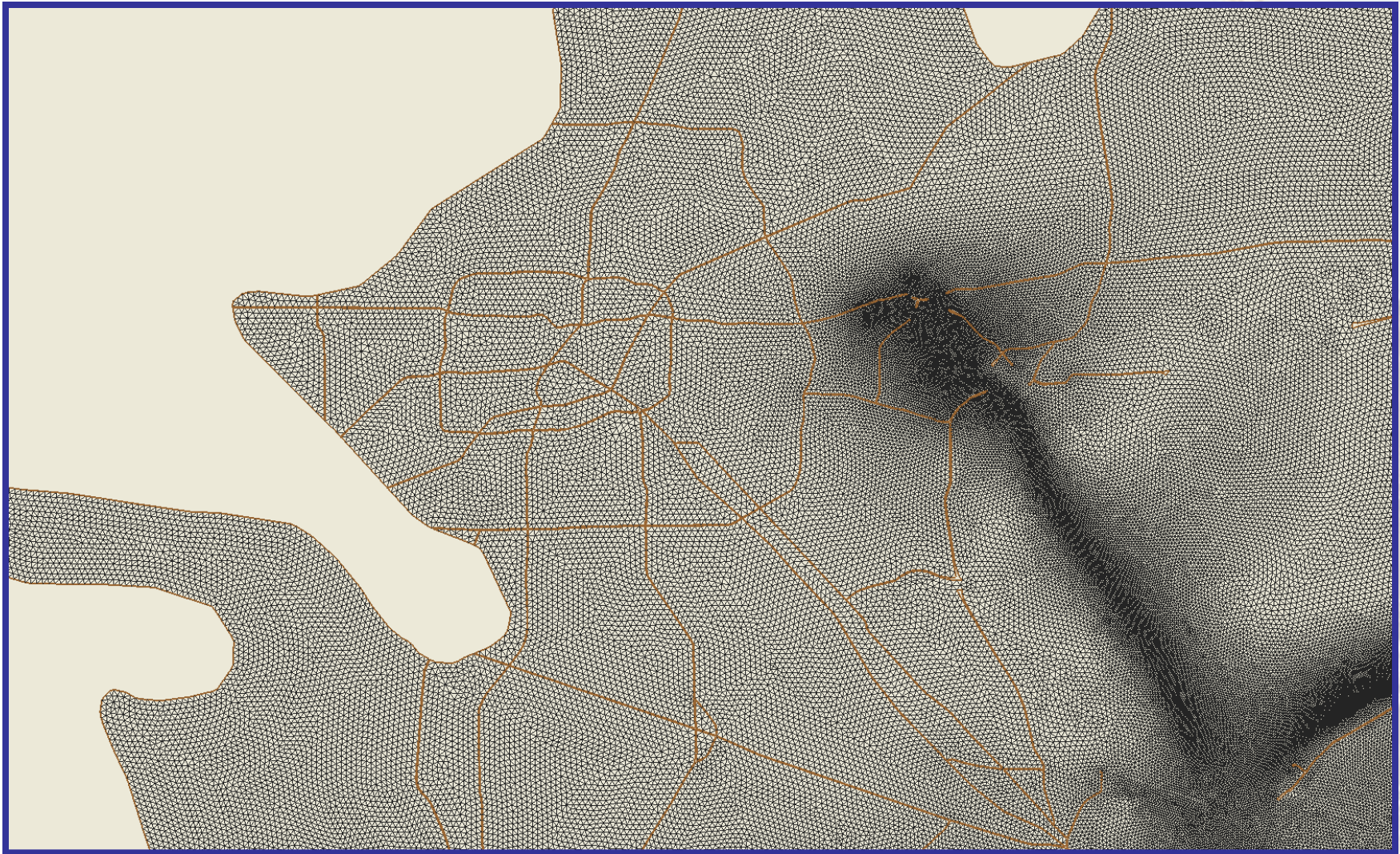
Model Development

TF02 Bathymetry Close-Up



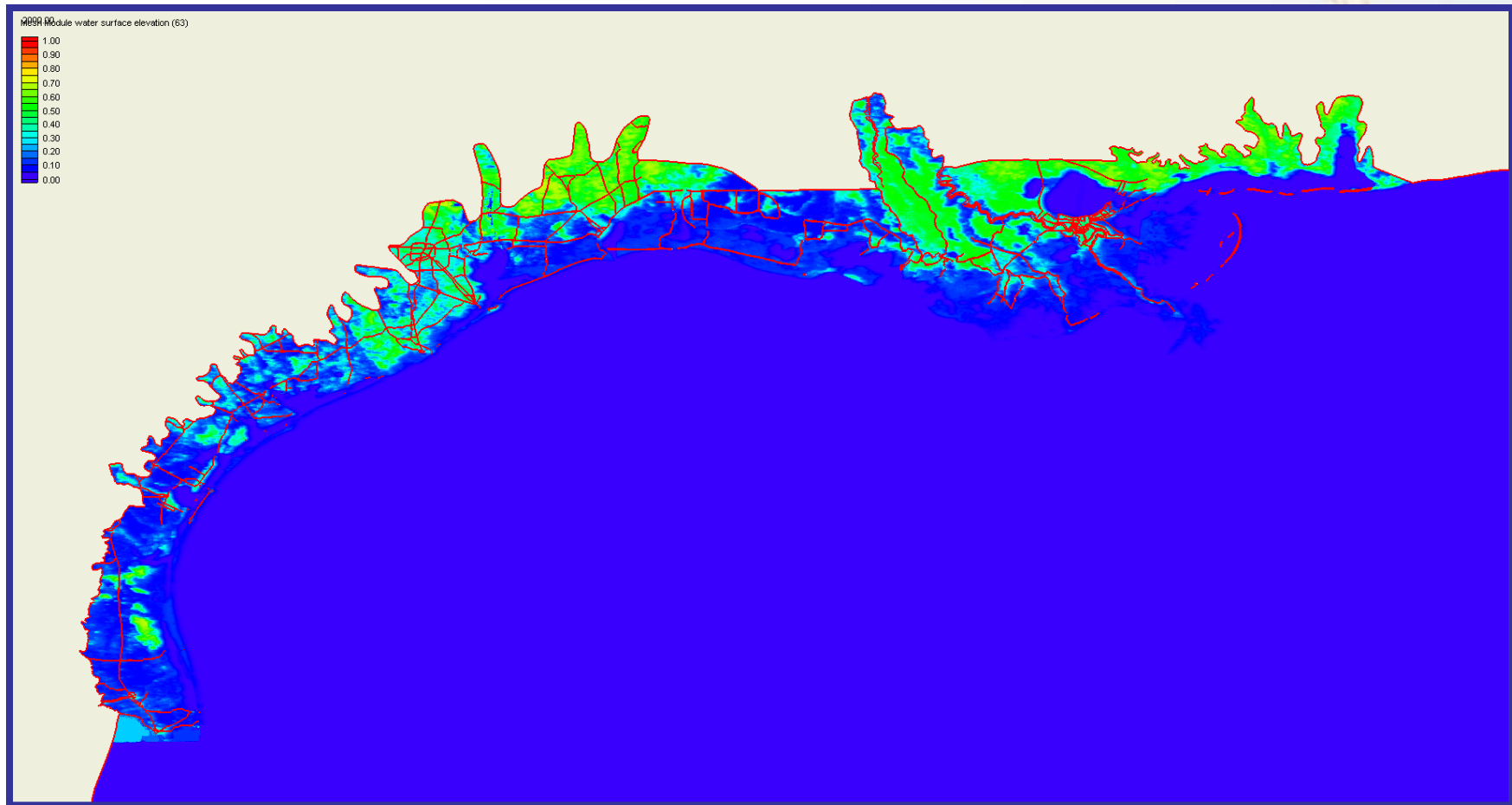
Model Development

TF02 Grid Close-Up



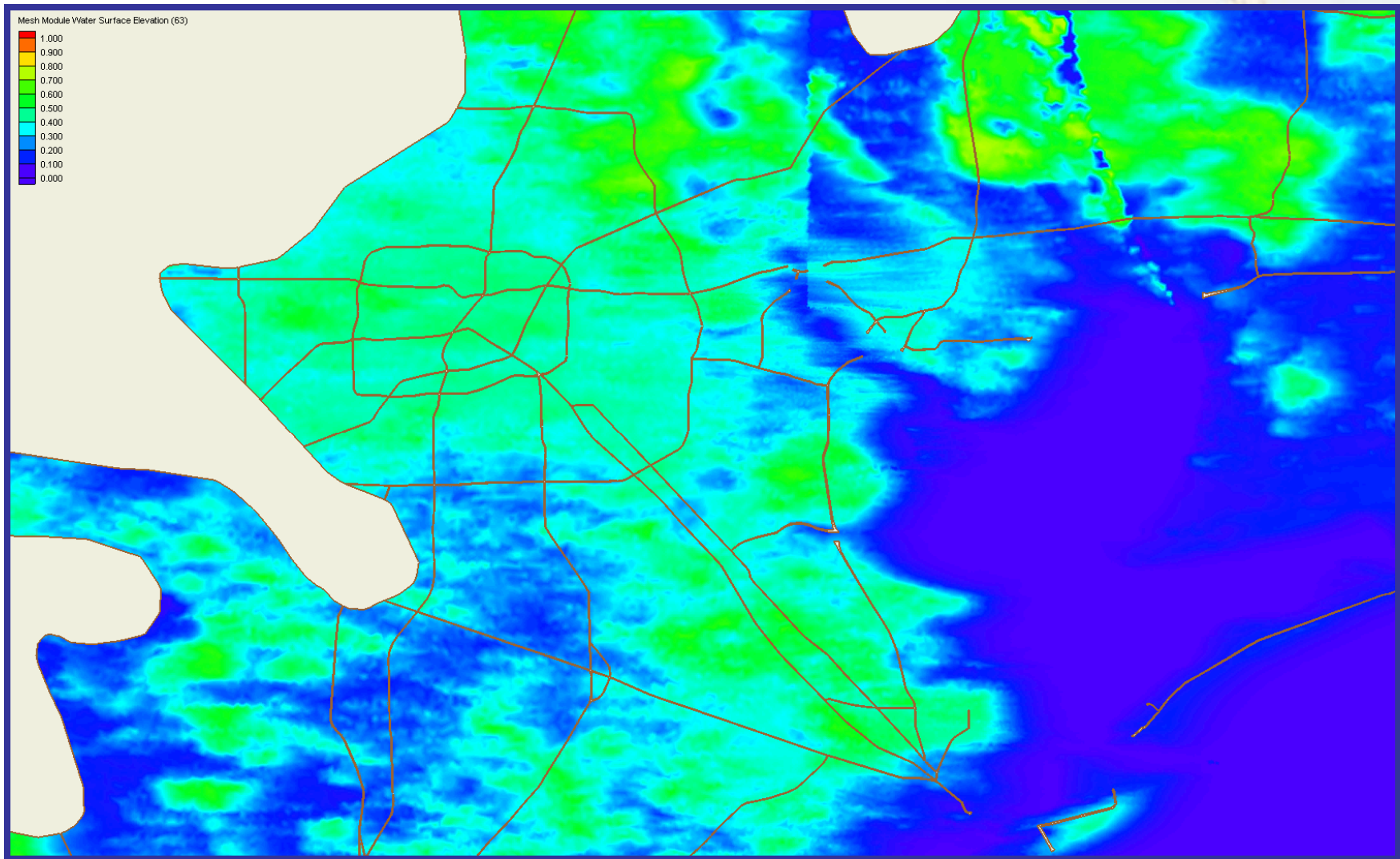
Model Development

Wind Reduction Factors



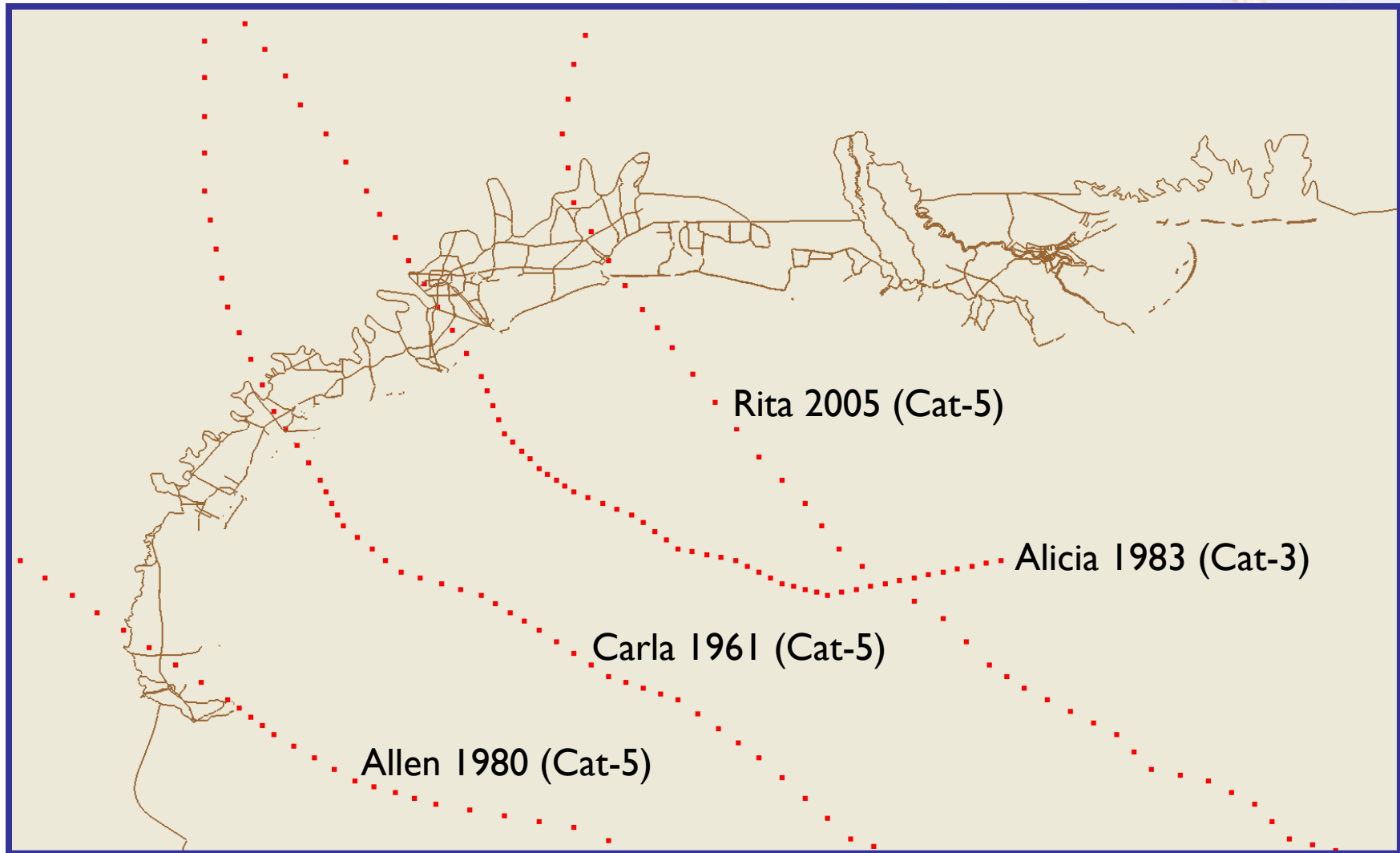
Model Development

Wind Reduction Factors Close-Up



Model Validation

Hurricane Tracks



Hurricane Rita

Quick Facts (http://en.wikipedia.org/wiki/Hurricane_Rita)

- Maximum winds: 175 mph
- Fourth-most intense Atlantic hurricane (897 mbar)
 - Most intense: Wilma 2005 (882 mbar)
 - Sixth-most intense: Katrina 2005 (902 mbar)
- Landfall: September 24, 2006
 - Earliest 17th named storm

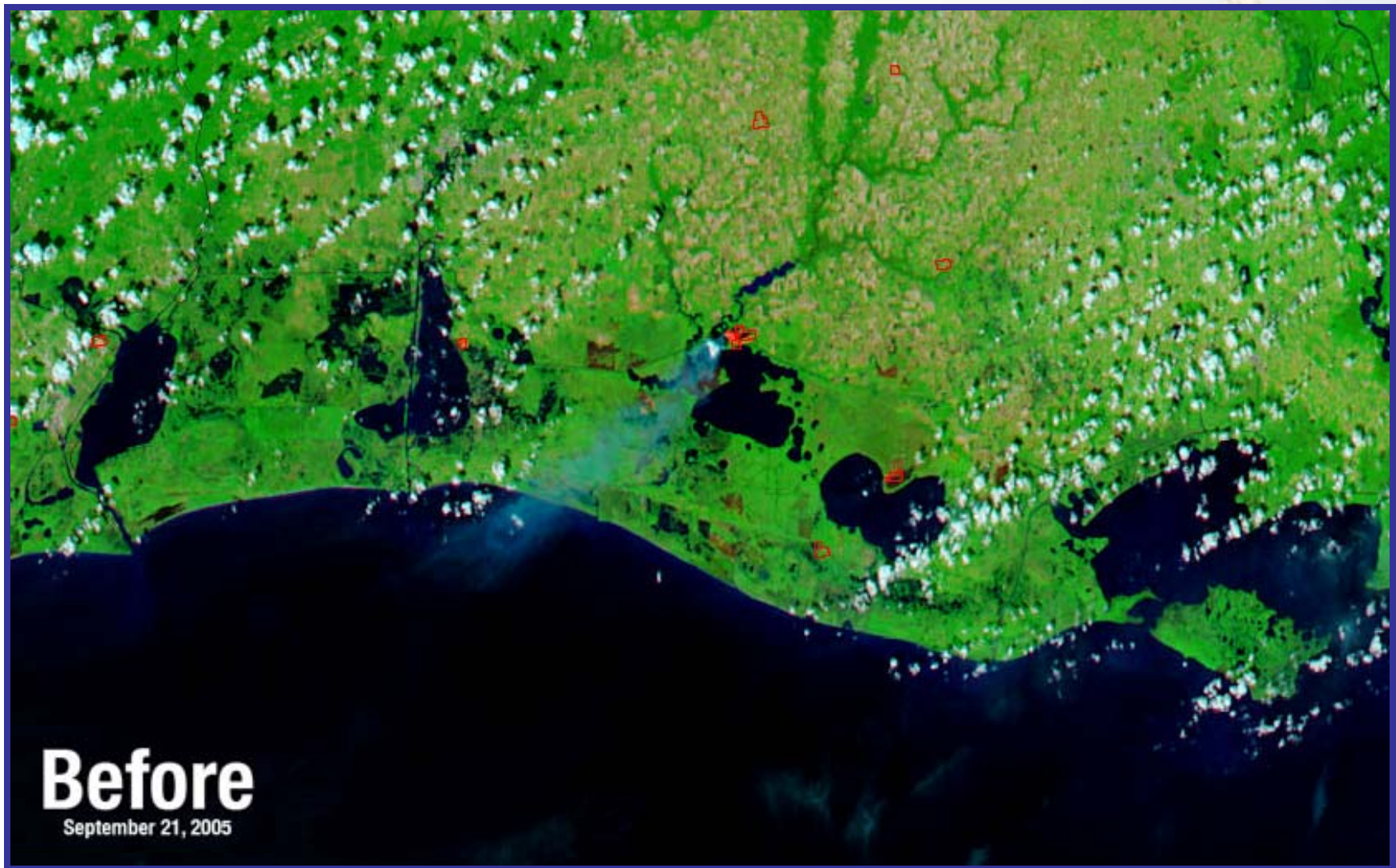
Hurricane Rita

NASA Satellite Movie (<http://svs.gsfc.nasa.gov/vis/a000000/a003200/a003265/index.html>)



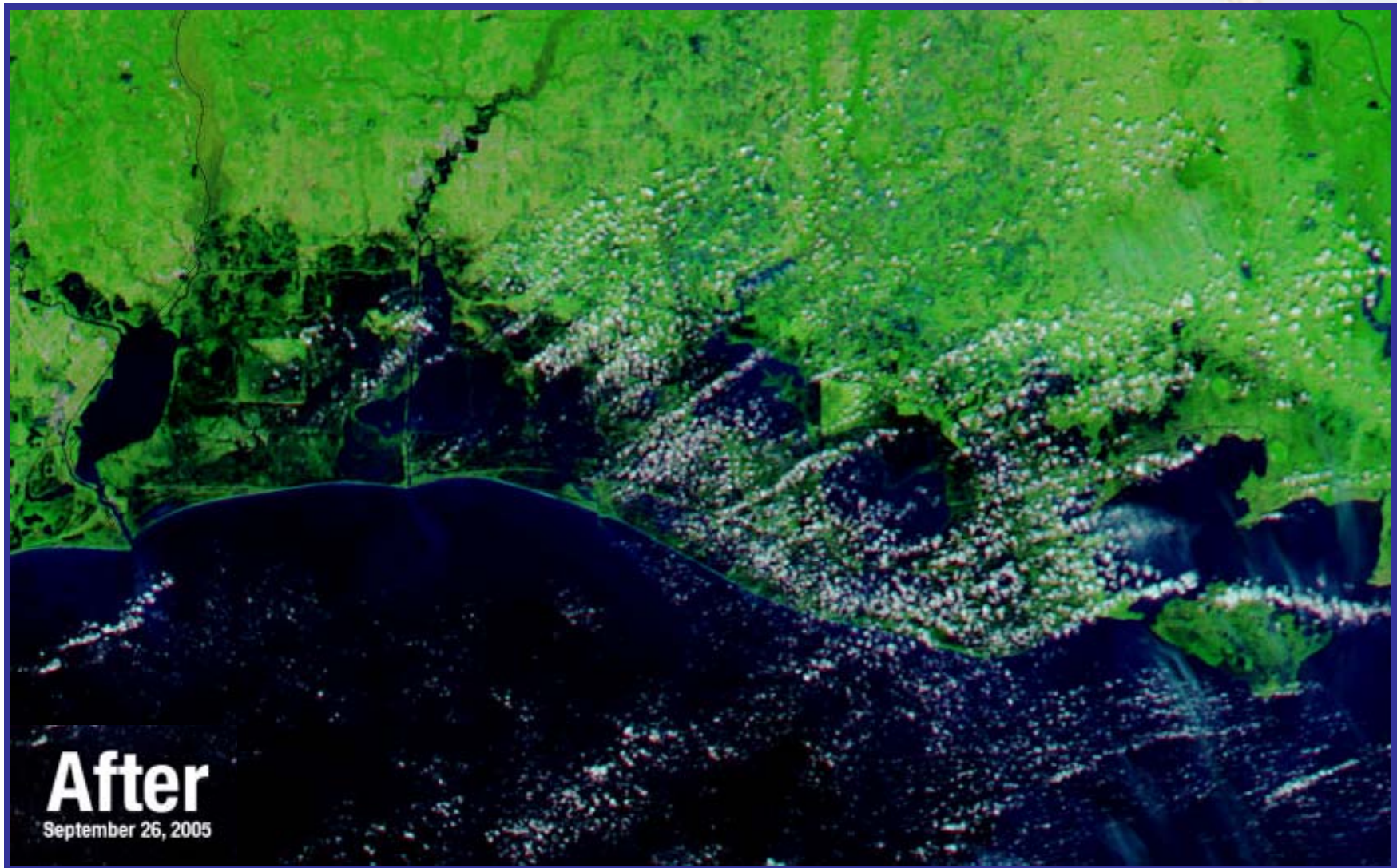
Hurricane Rita

NASA Satellite Image (http://www.nasa.gov/vision/earth/lookingatearth/h2005_rita.html)



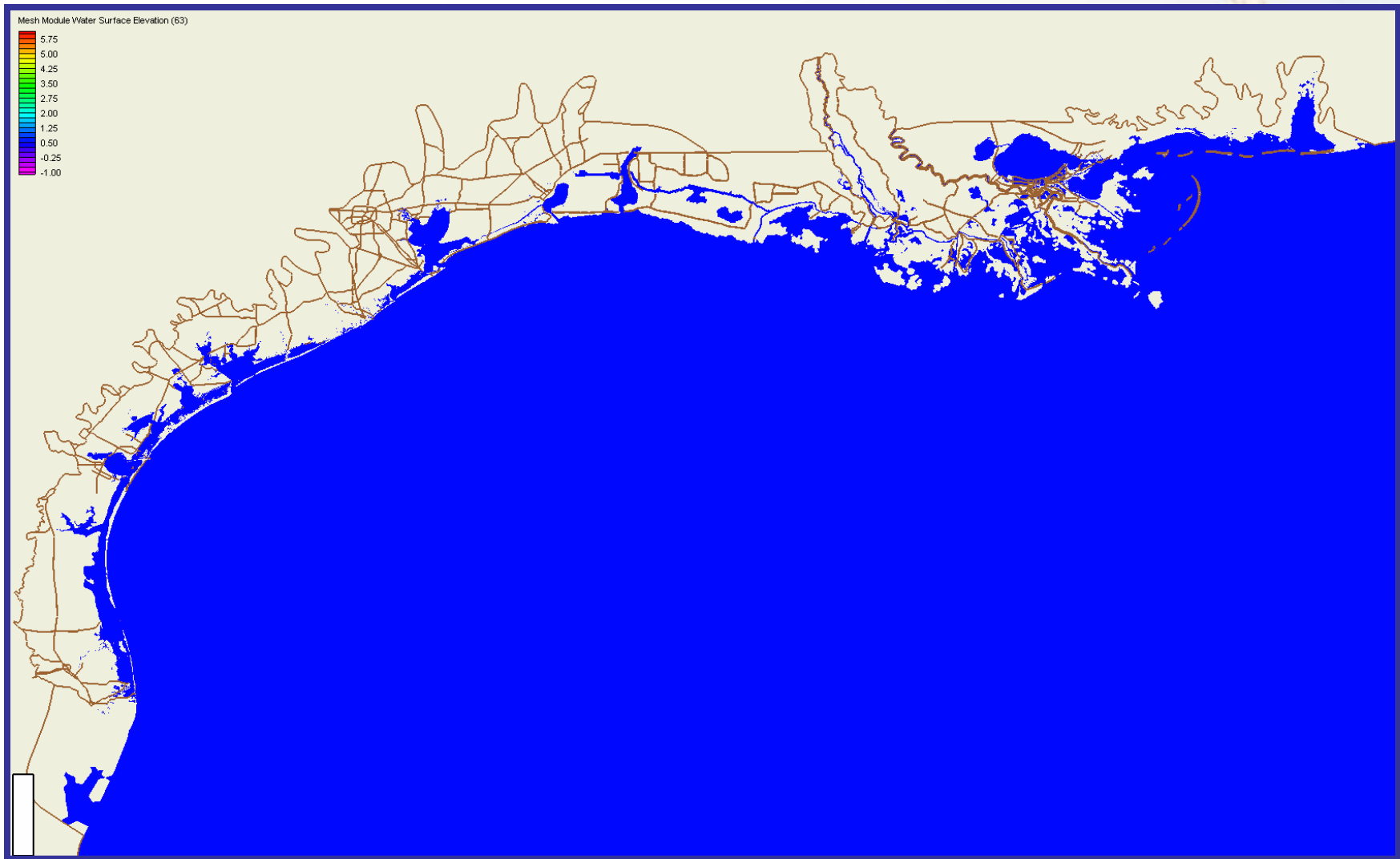
Hurricane Rita

NASA Satellite Image (http://www.nasa.gov/vision/earth/lookingatearth/h2005_rita.html)



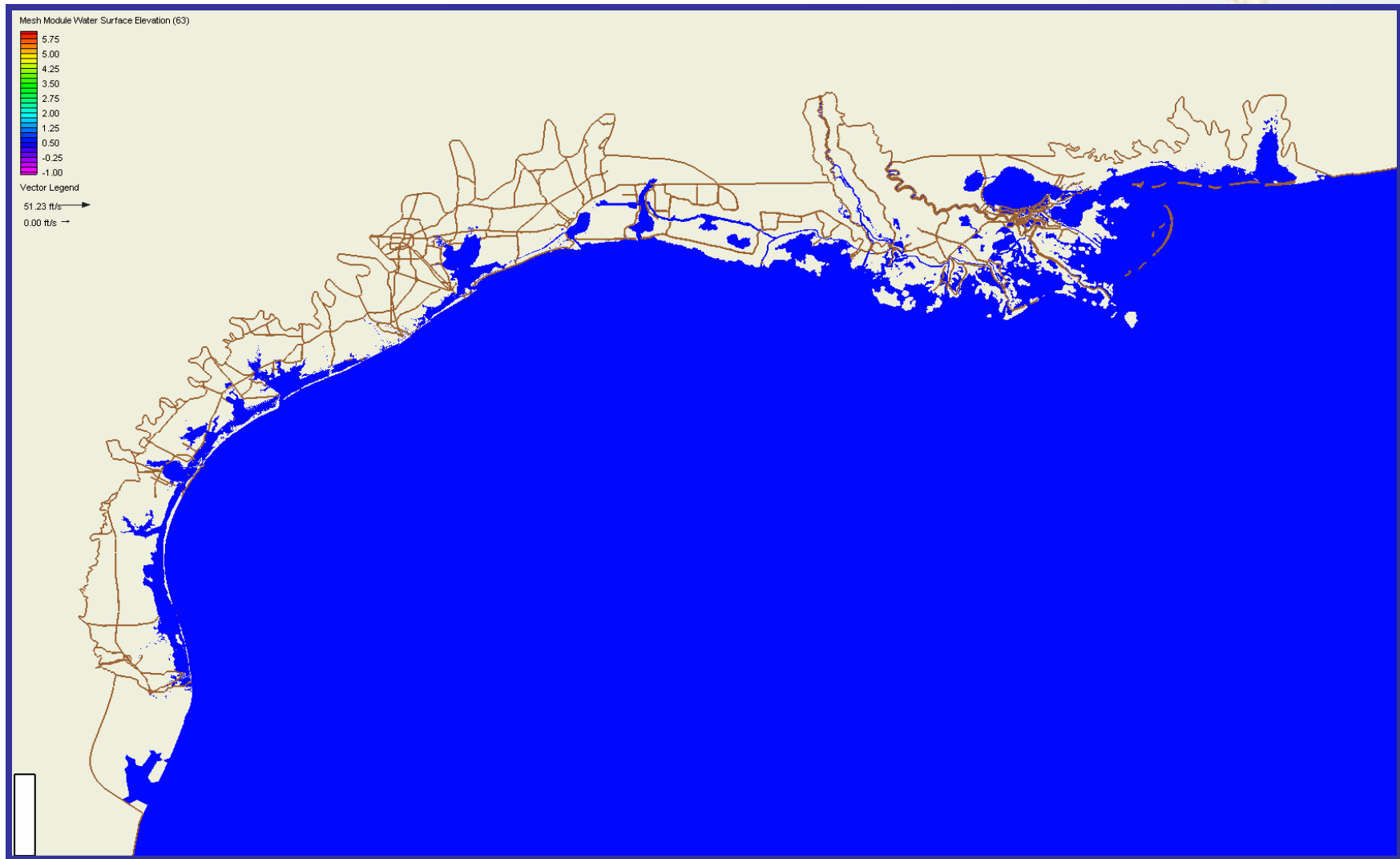
Hurricane Rita

ADCIRC Elevations



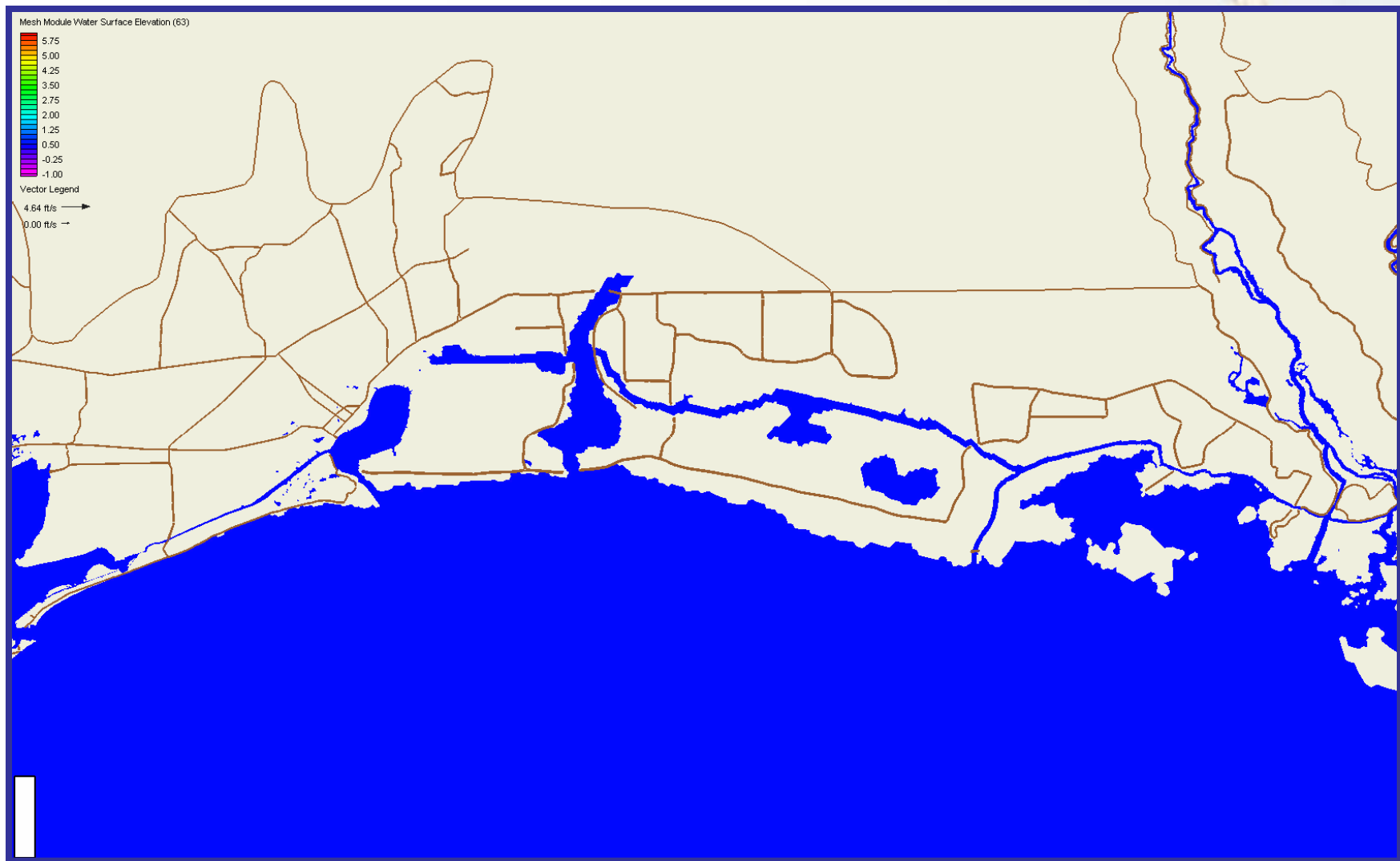
Hurricane Rita

ADCIRC Elevations and Winds



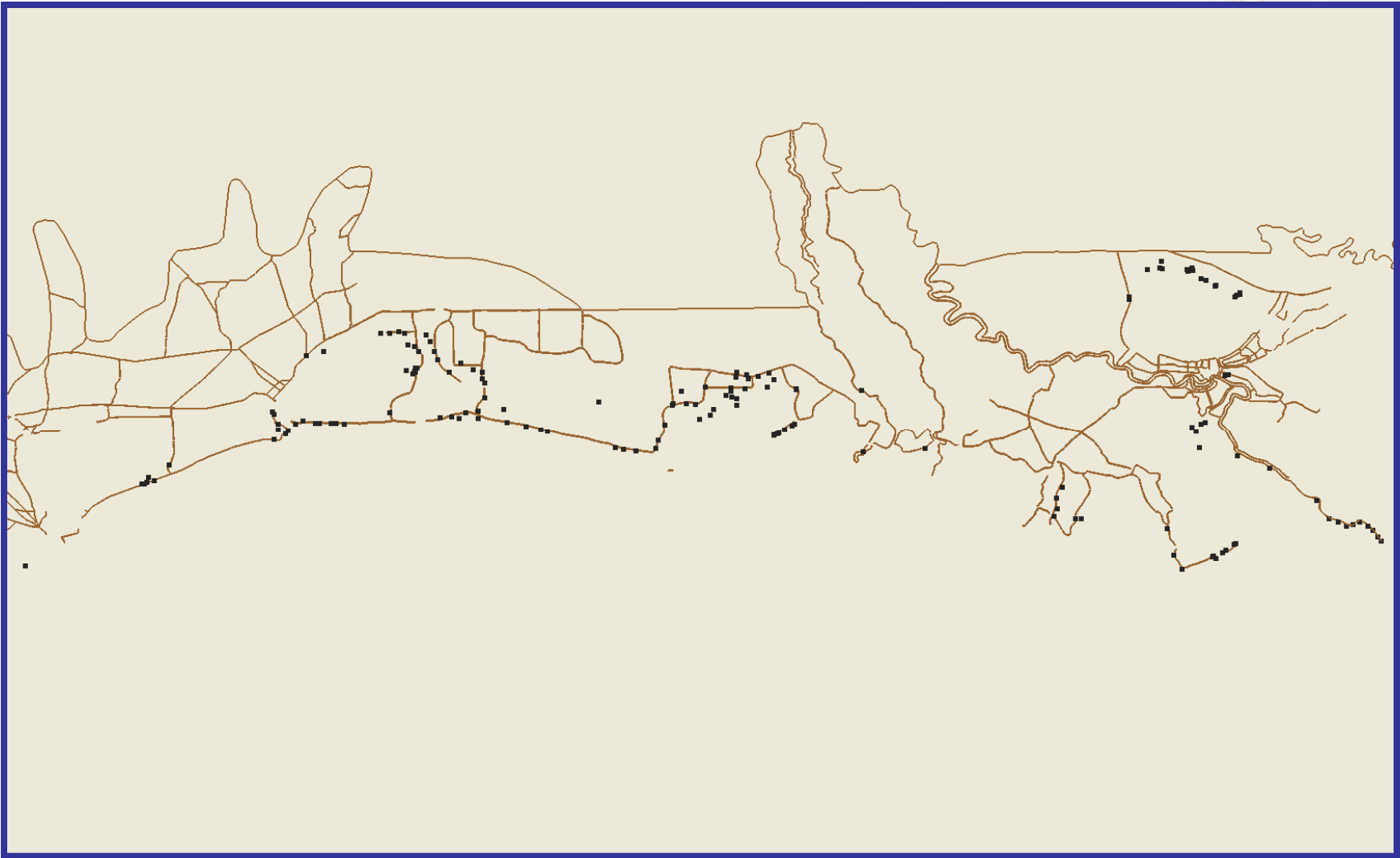
Hurricane Rita

ADCIRC Elevations and Velocities



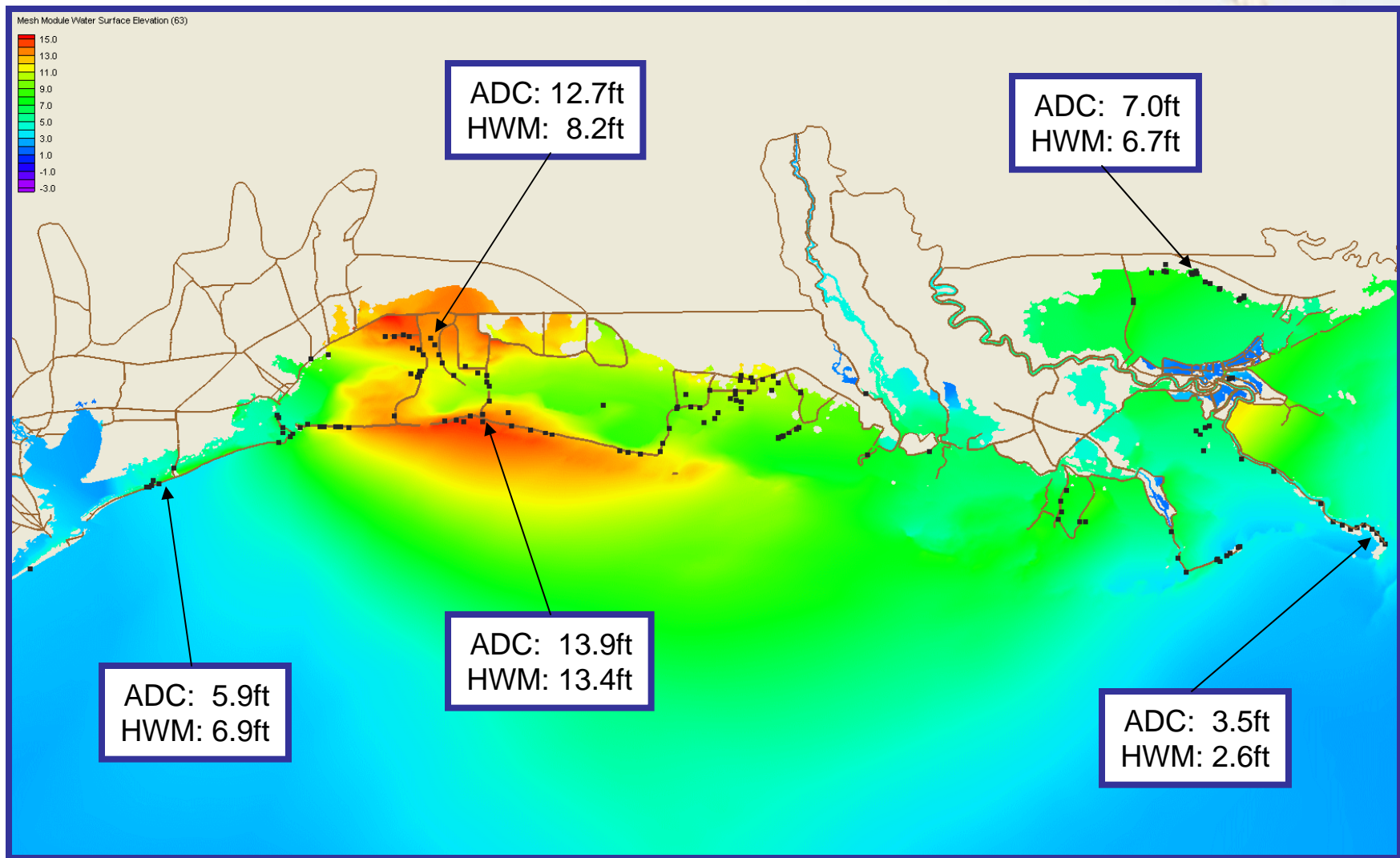
Hurricane Rita

FEMA Station Data



Hurricane Rita

FEMA Station Data



To Be Continued...

Conclusions

- ADCIRC simulation of Rita 2005 is realistic
 - ☑ Need better wind reduction factors
 - ☑ Need better resolution near the TX-LA border

Future Work

- Model hurricanes Alicia 1983, Allen 1980, and Carla 1961
 - Is qualitative behavior realistic?
 - Does ADCIRC match the historical record?
- Share model with FEMA

Questions?